

# MONTHLY MEMBERSHIP PROGRESS REPORT

LOCATION INDONESIA

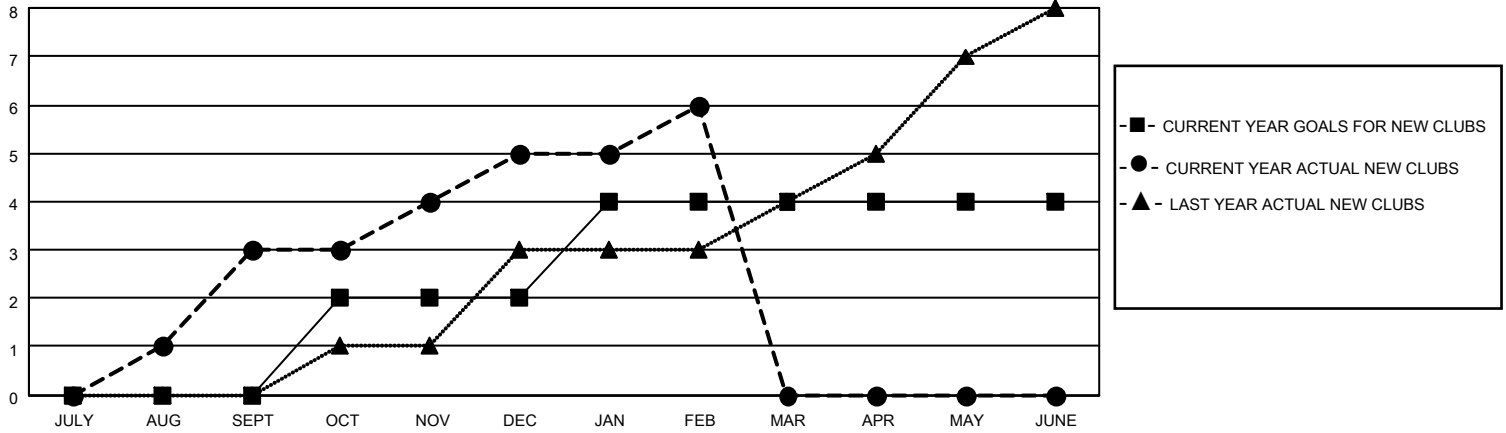
District 307 A2

Results as of: 2/28/2022

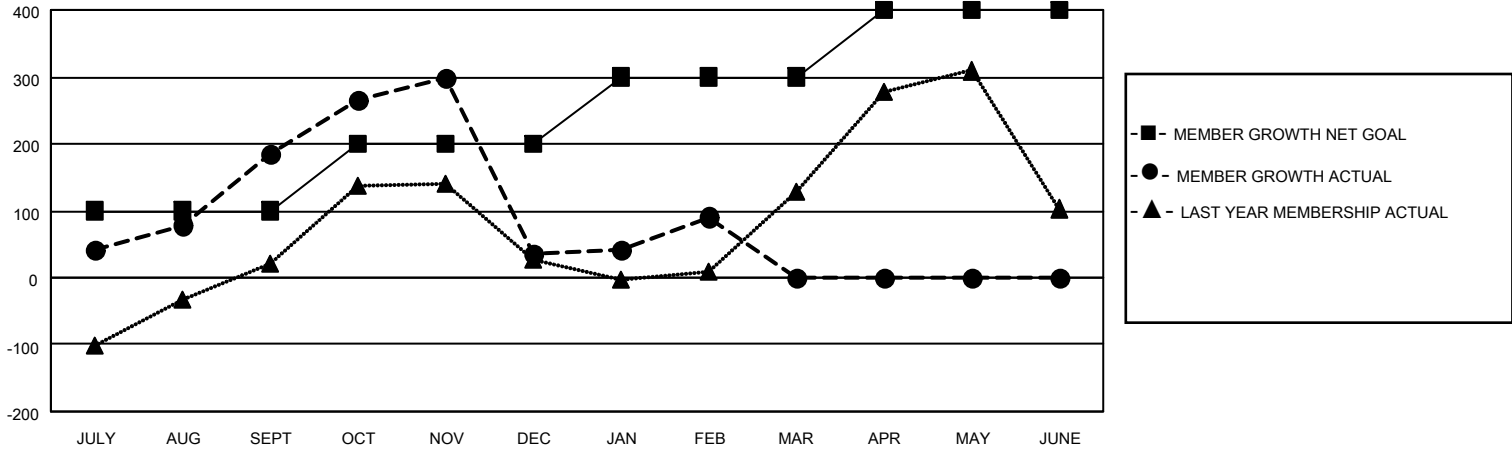
Clubs			
RESULTS FOR 2021-2022			
QUARTER	NEW CLUB GOAL	NEW CLUBS	DROPPED CLUBS
JULY/AUG/SEPT	0	3	4
OCT/NOV/DEC	2	2	0
JAN/FEB/MAR	2	1	1
APR/MAY/JUNE	0	0	0

Members			
RESULTS FOR 2021-2022			
QUARTER	MEMBER GROWTH NET GOAL	MEMBER GROWTH ACTUAL	DROPPED MEMBERS ACTUAL (including transfers)
JULY/AUG/SEPT	100	278	89
OCT/NOV/DEC	100	190	338
JAN/FEB/MAR	100	93	29
APR/MAY/JUNE	100	0	0

**GOALS AND ACTUAL NEW CLUBS CUMULATIVE**



**GOALS AND ACTUAL MEMBERS CUMULATIVE**



**DROPPED CLUBS: 5**

**67 CLUBS OF 103 ADDED 1 OR MORE NEW MEMBERS**

**GENDER DISTRIBUTION**

MALE	2,149 (56.46%)
FEMALE	1,657 (43.54%)
NON BINARY	0 (0.00%)
PREFER NOT TO ANSWER	0 (0.00%)

**DROPPED MEMBERS**

[CLICK HERE FOR CUMULATIVE MEMBERSHIP DATA](#)

DECEASED	7
CLUB CANCELLED	41
OTHER	408
<b>TOTAL</b>	<b>456</b>

TOTAL FAMILY UNIT MEMBERS 1,066

FAMILY MEMBERS PAYING HALF DUES 627